



ASSOCIATION of CANADIAN  
FACULTIES of DENTISTRY



L'ASSOCIATION des FACULTÉS  
DENTAIRES du CANADA

**DENTAL SPECIALTY**  
**CORE KNOWLEDGE EXAMINATION**

**November 13 – 14, 2010**

**P R O T O C O L**



ASSOCIATION of CANADIAN  
FACULTIES of DENTISTRY



L'ASSOCIATION des FACULTÉS  
DENTAIREs du CANADA

## TABLE OF CONTENTS

|  |    |
|--|----|
| CONTENT AND FORMAT .....                               | 1  |
| CORE BIOMEDICAL AND DENTAL SCIENCES COMPONENT.....     | 1  |
| SCIENTIFIC LITERATURE APPRAISAL SKILLS COMPONENT ..... | 2  |
| CORE CLINICAL SCIENCES COMPONENT .....                 | 3  |
| PATIENT MANAGEMENT COMPONENT.....                      | 4  |
| PART A.....  | 4  |
| PART B .....   | 4  |
| SCHEDULES.....   | 5  |
| IDENTIFICATION .....                                   | 5  |
| EXAMINATION INSTRUCTIONS.....                          | 6  |
| COMPONENTS 1, 2, 3, 4-PART B .....                     | 8  |
| COMPONENT 4-PART A.....                                | 9  |
| EXAMINATION REGULATIONS.....                           | 12 |
| REFERENCE TEXTS .....                                  | 12 |
| RESULTS .....  | 13 |
| REPEATS .....  | 13 |

## DENTAL SPECIALTY CORE KNOWLEDGE EXAMINATION

November 13 - 14, 2010

### I CONTENT AND FORMAT

The Dental Specialty Core Knowledge Examination (DSCKE) consists of the following four (4) components. Candidates will receive an individual score on each of the four (4) components.

#### 1. Core Biomedical and Dental Sciences Component - 2 hours

This component consists of multiple-choice type questions. It is given in a 2 hour examination session held during the morning of the first day of the Dental Specialty Core Knowledge Examination (DSCKE).

Outlined below are the content areas that may be tested. Examples of questions, content and format are provided as a reference and study guide. This component will examine basic concepts required for all graduates of specialty programs in Canada. This component will examine foundation science knowledge in the areas of:

- tooth morphology, growth and development of the craniofacial complex
- oral physiology
- microbiology and immunology of oral diseases
- pain
- pharmacology
- biological effects of radiation
- human anatomy
- human physiology
- human histology
- human biochemistry
- nutrition
- neurological sciences
- oral biomaterials.

## 2. **Scientific Literature Appraisal Skills Component** - 2 hours

This component consists of multiple-choice type questions and is given in a 2 hour examination session held during the afternoon of the first day of the Dental Specialty Core Knowledge Examination (DSCKE).

Candidates are expected to understand the principles of evidence-based practice, critically appraise abstracts selected from the scientific literature with respect to hypothesis development, experimental design, and data testing and interpretation. Candidates will also require a basic understanding of the principles of clinical epidemiology, including the use and calculation of parameters in contingency tables. Information regarding contingency tables may be found at [www.statpages.org](http://www.statpages.org) or [www.cebm.net](http://www.cebm.net). Candidates are expected to be familiar with principles of scientific article development and citation.

This component will contain a series of abstracts taken from the scientific literature outlining a problem being investigated, the experimental design, the results and the conclusions reported. The content of the articles will be from general science and not specific to a dental specialty. The object is to assess a candidate's ability to interpret the findings reported and to critically analyze the investigative procedures used.

### 3. **Core Clinical Sciences Component** - 2 hours

This component consists of multiple-choice type questions and is given in a 2 hour examination session held during the morning of the second day of the Dental Specialty Core Knowledge Examination (DSCKE).

Outlined below are the content areas that may be tested. This component will examine core clinical sciences concepts and applied clinical science knowledge including diagnosis, treatment planning, prognosis, treatment methods and clinical decision making in the areas of:

- general medicine and general pathology
- oral medicine and oral pathology
- radiology
- periodontics
- preventive dentistry
- operative dentistry
- endodontics
- prosthodontics
- orthodontics
- pediatric dentistry
- geriatric dentistry
- oral and maxillofacial surgery
- therapeutics
- dental biomaterials
- behavioural sciences
- dental public health and epidemiology
- ethics
- pain and anxiety control
- local anesthesia.

#### 4. **Patient Management Component**

##### **Part A** - 1½ hours

This part consists of multiple-choice type questions with one or more correct answers. It is given in a 1½ hour examination session held during the afternoon of the second day of the Dental Specialty Core Knowledge Examination (DSCKE). This part tests general patient management knowledge expected of Canadian dental specialty program graduates.

Part A consists of an extended match examination. Questions may include photographs of radiographs, photographs of casts, photographs of models, or photographs of patients and a patient case history if applicable. One or more responses may be correct and candidates are required to answer with the most appropriate response or responses. Each question will require the candidate to review the background information supplied and answer extended match questions.

##### **Part B** - 1½ hours

This part consists of multiple-choice type questions. It is given in a 1½ hour examination session held during the afternoon of the second day of the Dental Specialty Core Knowledge Examination (DSCKE). This part further tests patient management knowledge.

Part B consists of a series of questions with photographs of radiographs, photographs of casts, photographs of models, photographs of patients and a patient case history if applicable. Each question will require the candidate to review the information supplied and answer multiple choice type questions.

## **II**    **SCHEDULES** **DAY 1**

|  |                     |
|--|---------------------|
| <b>Registration</b>                    | <b>8:00 am</b>      |
| Core Biomedical and Dental Sciences    | 9:00 am to 11:00 am |
| Scientific Literature Appraisal Skills | 1:00 pm to 3:00 pm  |

## **DAY 2**

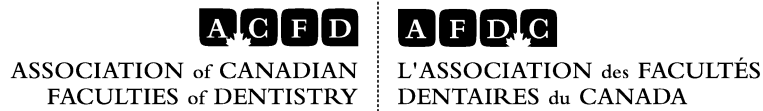
|                        |                     |
|------------------------|---------------------|
| <b>Registration</b>    | <b>8:00 am</b>      |
| Core Clinical Sciences | 9:00 am to 11:00 am |
| Patient Management     |                     |
| Part A                 | 1:00 pm to 2:30 pm  |
| Part B                 | 2:45 pm to 4:15 pm  |

## **III**    **IDENTIFICATION**

Candidates will receive a photo identification (ID) card on the day of the examination. Candidates must have their identification card visible at all times and must return the card to the test administrator at the end of the examination. Candidates who do not return their identification card may receive a zero “0” score for that component.

#### IV EXAMINATION INSTRUCTIONS

For each examination component, you will receive an examination book with your **NAME**, **CANDIDATE IDENTIFICATION** number, **SEAT** number and a book **VERSION** number. Below is an illustration of the examination book cover showing the location of the required identification information.



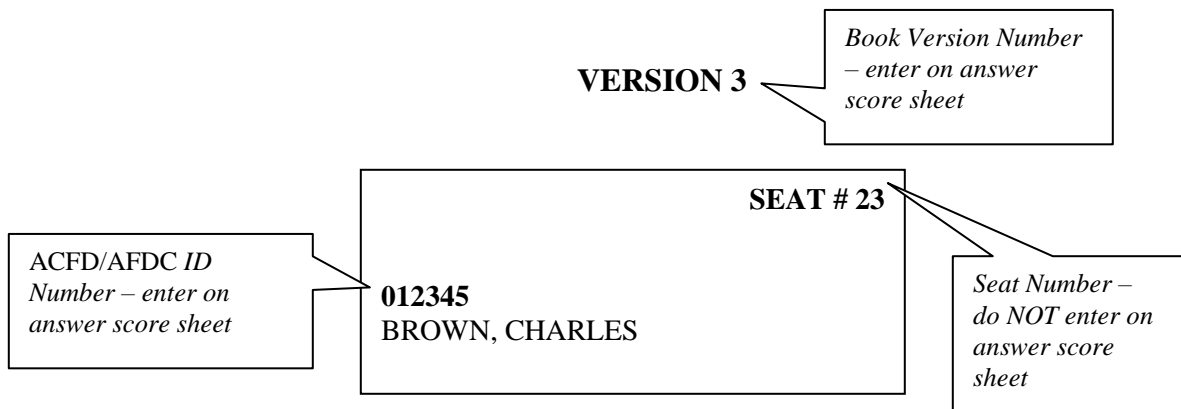
**DENTAL SPECIALTY**

**CORE KNOWLEDGE EXAMINATION**

**CORE BIOMEDICAL AND DENTAL SCIENCES**

**November 13, 2010**

(2 hour paper)





## **SAMPLE ANSWER SCORE SHEET FOR COMPONENTS 1, 2, 3, 4-Part B**

These components will have an answer entry section as illustrated below.

|    |           |    |           |    |           |     |           |     |           |     |           |
|----|-----------|----|-----------|----|-----------|-----|-----------|-----|-----------|-----|-----------|
| 1  | A B C D E | 26 | A B C D E | 51 | A B C D E | 76  | A B C D E | 101 | A B C D E | 126 | A B C D E |
| 2  | A B C D E | 27 | A B C D E | 52 | A B C D E | 77  | A B C D E | 102 | A B C D E | 127 | A B C D E |
| 3  | A B C D E | 28 | A B C D E | 53 | A B C D E | 78  | A B C D E | 103 | A B C D E | 128 | A B C D E |
| 4  | A B C D E | 29 | A B C D E | 54 | A B C D E | 79  | A B C D E | 104 | A B C D E | 129 | A B C D E |
| 5  | A B C D E | 30 | A B C D E | 55 | A B C D E | 80  | A B C D E | 105 | A B C D E | 130 | A B C D E |
| 6  | A B C D E | 31 | A B C D E | 56 | A B C D E | 81  | A B C D E | 106 | A B C D E | 131 | A B C D E |
| 7  | A B C D E | 32 | A B C D E | 57 | A B C D E | 82  | A B C D E | 107 | A B C D E | 132 | A B C D E |
| 8  | A B C D E | 33 | A B C D E | 58 | A B C D E | 83  | A B C D E | 108 | A B C D E | 133 | A B C D E |
| 9  | A B C D E | 34 | A B C D E | 59 | A B C D E | 84  | A B C D E | 109 | A B C D E | 134 | A B C D E |
| 10 | A B C D E | 35 | A B C D E | 60 | A B C D E | 85  | A B C D E | 110 | A B C D E | 135 | A B C D E |
| 11 | A B C D E | 36 | A B C D E | 61 | A B C D E | 86  | A B C D E | 111 | A B C D E | 136 | A B C D E |
| 12 | A B C D E | 37 | A B C D E | 62 | A B C D E | 87  | A B C D E | 112 | A B C D E | 137 | A B C D E |
| 13 | A B C D E | 38 | A B C D E | 63 | A B C D E | 88  | A B C D E | 113 | A B C D E | 138 | A B C D E |
| 14 | A B C D E | 39 | A B C D E | 64 | A B C D E | 89  | A B C D E | 114 | A B C D E | 139 | A B C D E |
| 15 | A B C D E | 40 | A B C D E | 65 | A B C D E | 90  | A B C D E | 115 | A B C D E | 140 | A B C D E |
| 16 | A B C D E | 41 | A B C D E | 66 | A B C D E | 91  | A B C D E | 116 | A B C D E | 141 | A B C D E |
| 17 | A B C D E | 42 | A B C D E | 67 | A B C D E | 92  | A B C D E | 117 | A B C D E | 142 | A B C D E |
| 18 | A B C D E | 43 | A B C D E | 68 | A B C D E | 93  | A B C D E | 118 | A B C D E | 143 | A B C D E |
| 19 | A B C D E | 44 | A B C D E | 69 | A B C D E | 94  | A B C D E | 119 | A B C D E | 144 | A B C D E |
| 20 | A B C D E | 45 | A B C D E | 70 | A B C D E | 95  | A B C D E | 120 | A B C D E | 145 | A B C D E |
| 21 | A B C D E | 46 | A B C D E | 71 | A B C D E | 96  | A B C D E | 121 | A B C D E | 146 | A B C D E |
| 22 | A B C D E | 47 | A B C D E | 72 | A B C D E | 97  | A B C D E | 122 | A B C D E | 147 | A B C D E |
| 23 | A B C D E | 48 | A B C D E | 73 | A B C D E | 98  | A B C D E | 123 | A B C D E | 148 | A B C D E |
| 24 | A B C D E | 49 | A B C D E | 74 | A B C D E | 99  | A B C D E | 124 | A B C D E | 149 | A B C D E |
| 25 | A B C D E | 50 | A B C D E | 75 | A B C D E | 100 | A B C D E | 125 | A B C D E | 150 | A B C D E |

SCANNER FORM NO. F-16324-NDEB © 2010 NATIONAL BOARD OF EXAMINERS INF2 3503 110 9 8 7

Each question in the examination books for Components 1, 2, 3, and 4 Part B is followed by a choice of answers. For each question there is only ONE correct answer. Always choose the MOST appropriate answer for each question. Each question has a score of “1” (one) and the lowest score for any question is “0” (zero).

## **SAMPLE QUESTIONS AND ANSWERS TO ILLUSTRATE FORMAT FOR COMPONENTS 1, 2, 3 AND 4-Part B**

1. Which of the following participate in clot formation?

- A. Platelets.
- B. Monocytes.
- C. Lymphocytes.
- D. Leukocytes.

ANSWER:  B  C  D  E

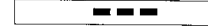
2. A laboratory fabricated composite resin inlay compared to a direct composite resin restoration has increased

- A. colour stability.
- B. surface smoothness.
- C. control of polymerization shrinkage.
- D. bondability to tooth structure.

ANSWER:  A  B  C  D  E

**SAMPLE ANSWER SCORE SHEET FOR COMPONENT 4-Part A**

This component will have an answer entry section as illustrated below



|    |   |   |   |   |   |   |   |   |   |   |   |   |   |   |   |
|----|---|---|---|---|---|---|---|---|---|---|---|---|---|---|---|
| 1  | A | B | C | D | E | F | G | H | I | J | K | L | M | N | O |
| 2  | A | B | C | D | E | F | G | H | I | J | K | L | M | N | O |
| 3  | A | B | C | D | E | F | G | H | I | J | K | L | M | N | O |
| 4  | A | B | C | D | E | F | G | H | I | J | K | L | M | N | O |
| 5  | A | B | C | D | E | F | G | H | I | J | K | L | M | N | O |
| 6  | A | B | C | D | E | F | G | H | I | J | K | L | M | N | O |
| 7  | A | B | C | D | E | F | G | H | I | J | K | L | M | N | O |
| 8  | A | B | C | D | E | F | G | H | I | J | K | L | M | N | O |
| 9  | A | B | C | D | E | F | G | H | I | J | K | L | M | N | O |
| 10 | A | B | C | D | E | F | G | H | I | J | K | L | M | N | O |
| 11 | A | B | C | D | E | F | G | H | I | J | K | L | M | N | O |
| 12 | A | B | C | D | E | F | G | H | I | J | K | L | M | N | O |
| 13 | A | B | C | D | E | F | G | H | I | J | K | L | M | N | O |
| 14 | A | B | C | D | E | F | G | H | I | J | K | L | M | N | O |
| 15 | A | B | C | D | E | F | G | H | I | J | K | L | M | N | O |
| 16 | A | B | C | D | E | F | G | H | I | J | K | L | M | N | O |
| 17 | A | B | C | D | E | F | G | H | I | J | K | L | M | N | O |
| 18 | A | B | C | D | E | F | G | H | I | J | K | L | M | N | O |
| 19 | A | B | C | D | E | F | G | H | I | J | K | L | M | N | O |
| 20 | A | B | C | D | E | F | G | H | I | J | K | L | M | N | O |
| 21 | A | B | C | D | E | F | G | H | I | J | K | L | M | N | O |
| 22 | A | B | C | D | E | F | G | H | I | J | K | L | M | N | O |
| 23 | A | B | C | D | E | F | G | H | I | J | K | L | M | N | O |
| 24 | A | B | C | D | E | F | G | H | I | J | K | L | M | N | O |
| 25 | A | B | C | D | E | F | G | H | I | J | K | L | M | N | O |
| 26 | A | B | C | D | E | F | G | H | I | J | K | L | M | N | O |
| 27 | A | B | C | D | E | F | G | H | I | J | K | L | M | N | O |
| 28 | A | B | C | D | E | F | G | H | I | J | K | L | M | N | O |
| 29 | A | B | C | D | E | F | G | H | I | J | K | L | M | N | O |
| 30 | A | B | C | D | E | F | G | H | I | J | K | L | M | N | O |
| 31 | A | B | C | D | E | F | G | H | I | J | K | L | M | N | O |
| 32 | A | B | C | D | E | F | G | H | I | J | K | L | M | N | O |
| 33 | A | B | C | D | E | F | G | H | I | J | K | L | M | N | O |
| 34 | A | B | C | D | E | F | G | H | I | J | K | L | M | N | O |
| 35 | A | B | C | D | E | F | G | H | I | J | K | L | M | N | O |
| 36 | A | B | C | D | E | F | G | H | I | J | K | L | M | N | O |
| 37 | A | B | C | D | E | F | G | H | I | J | K | L | M | N | O |
| 38 | A | B | C | D | E | F | G | H | I | J | K | L | M | N | O |
| 39 | A | B | C | D | E | F | G | H | I | J | K | L | M | N | O |
| 40 | A | B | C | D | E | F | G | H | I | J | K | L | M | N | O |
| 41 | A | B | C | D | E | F | G | H | I | J | K | L | M | N | O |
| 42 | A | B | C | D | E | F | G | H | I | J | K | L | M | N | O |
| 43 | A | B | C | D | E | F | G | H | I | J | K | L | M | N | O |
| 44 | A | B | C | D | E | F | G | H | I | J | K | L | M | N | O |
| 45 | A | B | C | D | E | F | G | H | I | J | K | L | M | N | O |
| 46 | A | B | C | D | E | F | G | H | I | J | K | L | M | N | O |
| 47 | A | B | C | D | E | F | G | H | I | J | K | L | M | N | O |
| 48 | A | B | C | D | E | F | G | H | I | J | K | L | M | N | O |
| 49 | A | B | C | D | E | F | G | H | I | J | K | L | M | N | O |
| 50 | A | B | C | D | E | F | G | H | I | J | K | L | M | N | O |

Questions in Component 4-Part A will have one or more correct answers. Select all correct answers to get full marks. Marks will be deducted for incorrect responses. However, some responses may not be definitely correct or incorrect and may be given a value of zero (0). If a definitely incorrect answer is selected, the candidate will receive a zero (0) for the whole question. The minimum score for any question is zero (0). The maximum score for any question is one (1).

Part marks will be awarded if some, but not all, of the correct answers are selected, provided that no incorrect answer is selected. Two examples of the scoring system follow. The score for each response is given to the left of each response.

**SAMPLE QUESTIONS AND ANSWERS TO ILLUSTRATE FORMAT FOR COMPONENT 4-Part A**

**Question: 1 (Select ONE OR MORE correct answers.)**

There is radiographic evidence of caries on the

**Value**

- 1 A. distal of tooth 2.3.
- 1 B. mesial of tooth 2.4.
- 0 C. distal of tooth 2.4.
- .2 D. mesial of tooth 2.5.
- .2 E. distal of tooth 2.5.
- .2 F. mesial of tooth 2.6.

**Value**

- .2 G. distal of tooth 2.6.
- .2 H. mesial of tooth 2.7.
- 1 I. distal of tooth 2.7.
- 1 J. mesial of tooth 2.8.
- 0 K. distal of tooth 2.8.

A  B  C       I  J  K  L  M  N  O for full mark.

**Question: 2 (Select ONE OR MORE correct answers.)**

There is radiographic evidence of calculus on the

**Value**

- 1 A. distal of tooth 2.3.
- 1 B. mesial of tooth 2.4.
- 1 C. distal of tooth 2.4.
- .3 D. mesial of tooth 2.5.
- .3 E. distal of tooth 2.5.
- .4 F. mesial of tooth 2.6

**Value**

- 0 G. distal of tooth 2.6.
- 0 H. mesial of tooth 2.7.
- 1 I. distal of tooth 2.7.
- 1 J. mesial of tooth 2.8.
- 0 K. distal of tooth 2.8.

A  B  C     G  H  I  J  K  L  M  N  O for full mark.

**THE FOLLOWING INSTRUCTIONS APPLY TO ALL COMPONENTS OF THE EXAMINATION**

1. Enter your NAME, your assigned CANDIDATE ID NUMBER and your examination book VERSION NUMBER in the indicated areas on the answer score sheet.
2. Record your answer(s) on the answer score sheet using a standard (wood) lead pencil (No. 2 or HB). Mechanical pencils are not allowed in the examination area. Make heavy black marks that fill the circle(s) completely.
3. If you change your answer(s), make sure that the original mark(s) is/are thoroughly erased. Use a standard block eraser; mechanical erasers are not allowed in the examination area.
4. Each examination book, the answer score sheet and candidate identification card must be returned. If an examination book (or any part of a book) or the answer score sheet is not returned, a zero “0” score will be given for that component. No test items are to be copied or notes taken. Use of any notes or recording of notes is prohibited and will be considered as compromising the integrity of the examination.
5. You may write in the book to assist yourself in answering the questions. Your grade, however, will depend upon the answers recorded on the answer score sheet. Please ensure the accuracy of the transfer of answers onto the score sheet.
6. The transfer of answers to the computer score sheet must be completed within the examination session time. Additional time will not be allowed.
7. The FDI two digit tooth numbering system (below) is used in all examinations.

**FDI NUMBERING SYSTEM**

Permanent Dentition

|       |     |     |     |     |     |     |     |      |     |     |     |     |     |     |     |
|-------|-----|-----|-----|-----|-----|-----|-----|------|-----|-----|-----|-----|-----|-----|-----|
| 1.8   | 1.7 | 1.6 | 1.5 | 1.4 | 1.3 | 1.2 | 1.1 | 2.1  | 2.2 | 2.3 | 2.4 | 2.5 | 2.6 | 2.7 | 2.8 |
| 4.8   | 4.7 | 4.6 | 4.5 | 4.4 | 4.3 | 4.2 | 4.1 | 3.1  | 3.2 | 3.3 | 3.4 | 3.5 | 3.6 | 3.7 | 3.8 |
| RIGHT |     |     |     |     |     |     |     | LEFT |     |     |     |     |     |     |     |

Primary Dentition

|       |     |     |     |     |      |     |     |     |     |
|-------|-----|-----|-----|-----|------|-----|-----|-----|-----|
| 5.5   | 5.4 | 5.3 | 5.2 | 5.1 | 6.1  | 6.2 | 6.3 | 6.4 | 6.5 |
| 8.5   | 8.4 | 8.3 | 8.2 | 8.1 | 7.1  | 7.2 | 7.3 | 7.4 | 7.5 |
| RIGHT |     |     |     |     | LEFT |     |     |     |     |

## **V REFERENCE TEXTS**

A list of textbooks and references commonly used in DDS/DMD programs can be found on the ACFD/AFDC web site at [www.acfd.ca](http://www.acfd.ca)

## **VI EXAMINATION REGULATIONS**

1. Candidates must be punctual for all sessions of the examination. Candidates arriving late for an examination session may not be admitted.
2. Family or friends must NOT accompany a candidate as space at the examination centre is provided ONLY for candidates and staff.
3. Candidates must not bring recording devices, radios, cameras, portable telephones, pagers or other electronic aids/devices into the examination room.
4. Candidates may NOT use dictionaries, calculators or other informative material.
5. Food and/or drink are not allowed in the examination room unless special consideration for medical reasons has been granted in advance by the ACFD/AFDC office. The request must include a medical certificate signed by a physician indicating the diagnosis and accommodation measures required.
6. The ability of a candidate to read, interpret and comply with instructions and other written material is part of the examination. Test administrators and invigilators will not answer questions involving examination content.
7. Once the examination is in progress, any candidate who leaves the examination room for any reason, including the use of washroom facilities, WILL NOT be allowed to re-enter unless special consideration for medical reasons has been granted, in advance, by the ACFD/AFDC office. Requests must include a medical certificate signed by a physician indicating the diagnosis and accommodation measures required.
8. Candidates requiring special examination accommodation due to diagnosed medical conditions must request special consideration in writing within two weeks of receipt of confirmation of registration in the examination. This request must include a medical certificate signed by a physician indicating the diagnosis and accommodation measures required.
9. Candidates are prohibited from copying or otherwise obtaining answers from any other candidate; from providing answers to any other candidate; and, from talking or otherwise disrupting the conduct of the examination. Candidates are responsible for ensuring that their answers are not visible to other candidates. Candidates must be aware that the ACFD/AFDC uses a software program to identify suspicious answer similarities between pairs of candidates and may void the results of both candidates involved in suspicious occurrences identified by the software program.

10. Candidates must stop writing and hand in the examination book and answer score sheet at the indicated time. The transfer of answers from examination books to computer score sheets **MUST** be completed within the examination session time. Additional time will not be allowed.
11. Candidates are prohibited from removing test material including identification cards, examination books and answer score sheets from the examination room, and from copying or making notes of any test item. Candidates must return all test material including identification cards, examination books and answer score sheets at the completion of each examination or upon the direction of the test administrator.
12. Candidates are reminded that all examination material is copyrighted. Any attempt to reproduce or assemble ACFD/AFDC examination material is strictly prohibited and will be prosecuted.
13. Candidates who do not abide by the above Examination Regulations will receive a zero (0) score for all components.
14. Within three months of the release of the results of the examination, candidates may apply to the ACFD/AFDC to have their answer score sheets manually checked against the answer key. Any such application for review must be accompanied by a filing fee as set by the ACFD/AFDC. Upon verification, the mark for the candidate will be that produced by the manual check.
15. A candidate who considers himself or herself disadvantaged either immediately before or during the examination by a personal circumstance beyond the candidate's control may, within one week of the event beyond the candidate's control occurring, request that the ACFD/AFDC Board make a special consideration to void the results of the examination by permitting the candidate to withdraw from the examination. The candidate may also request special consideration for a refund of up to 50% of the examination fee.

## **VII RESULTS**

To assure the consistency of scores, the ACFD/AFDC uses a test equating procedure. This procedure correlates a standardized reference examination with the current version of the examination and determines the passing standard. Candidates should also be aware that each examination contains a number of questions that are being pilot tested and that these questions may not contribute to any candidate score.

The results of the Dental Specialty Core Knowledge Examination will be sent by regular mail to candidates and any program identified by the candidates normally within six weeks of the examination. Candidates must notify the ACFD/AFDC office of any change of address.

**Results will not be released by telephone, fax or email.**

## **VIII REPEATS**

A candidate has the privilege of retaking the Dental Specialty Core Knowledge Examination once.